

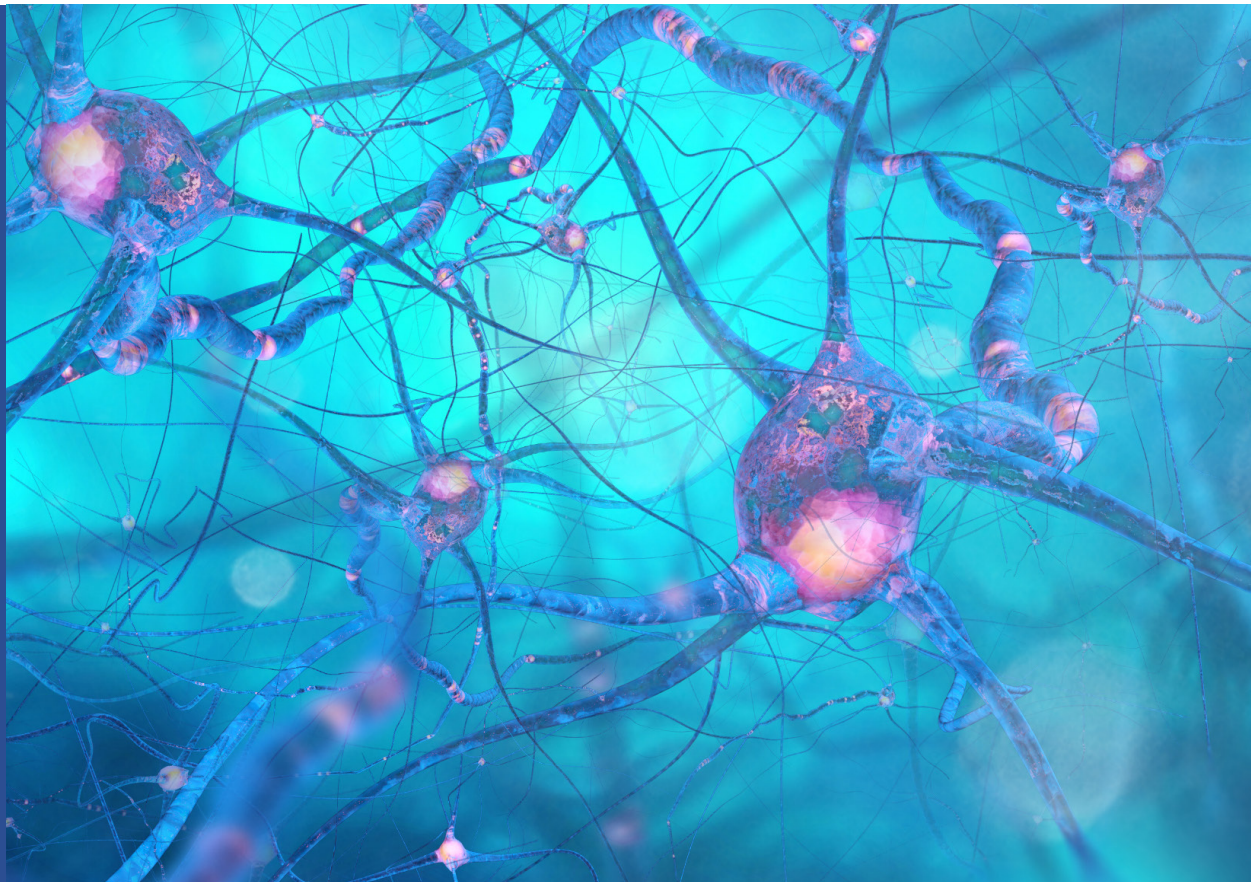
The 6th InterAcademy Workshop
The 1st Immunology LEDARE Workshop

Vascular and Neuroimmune Interactions

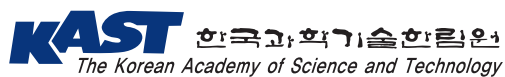
2023 June 16

Venue: Frösundavik SAS building, Solna

June 16-17, 2023
KNTEC, Stockholm, Sweden



Produced by



In Cooperation with



The 6th Inter Academy Workshop Vascular and Neuroimmune Interactions

Date: June 16 (Fri) – 17 (Sat), 2023

Venue: KNTEC, Stockholm, Sweden

| DAY 1 - June 16.(Fri) | |
|--|--|
| Opening | |
| 09:20-09:40 | Welcoming Remarks Prof. Aree Moon , Vice President, The Korean Academy of Science and Technology, Korea Prof. Gou Young Koh , IBS/KAIST, Korea Group Photo |
| Morning Session Chair: Prof. Gou Young Koh / KAIST, Korea | |
| 09:40-10:20 | Regulation of vascular permeability in health and disease Prof. Lena Claesson-Welsh / Uppsala University, Sweden |
| 10:20-11:00 | Pro-tumorigenic monocytes and neutrophils in solid cancers Prof. Keehoon Jung / Seoul National University, Korea |
| 11:00-11:40 | Crosstalk of growth factor receptor and integrin signaling pathways in the vasculature Prof. Pipsa Saharinen / University of Helsinki, Finland |
| 11:40-12:00 | Three-dimensional morphologic and molecular atlases of nasal vasculature Prof. Seon Pyo Hong / Institute for Basic Science, Korea |
| 12:00-14:00 | Lunch Break |
| Afternoon session I Chair: Prof. Christer Betsholtz / Uppsala University, Sweden | |
| 14:00-14:40 | Oncogenic mechanisms driving vascular malformations Prof. Taija Mikinen / Uppsala University, Sweden |
| 14:40-15:20 | Longitudinal intravital imaging of disruption of neurovascular unit and blood brain barrier in cerebral microinfarction Prof. Pilhan Kim / KAIST, Korea |
| 15:20-16:00 | Metabolic regulation of the vasculature Dr. Michael Potente / Berlin Institute of Health at Charité, Germany |
| 16:00-16:20 | Coffee Break |
| Afternoon session II Chair: Prof. Lena Claesson-Welsh / Uppsala University, Sweden | |
| 16:20-16:40 | Regulation of homeostatic maintenance of the lymph node lymphatic vasculature Dr. Bojana Jakic / Uppsala University, Sweden |
| 16:40-17:20 | Anti-inflammatory clearance of amyloid beta by a chimeric Gas6 fusion protein Prof. Won-Suk Chung / KAIST, Korea |
| 17:20-18:00 | Molecular anatomy of the brain's leptomeninges Prof. Christer Betsholtz / Uppsala University, Sweden |
| 18:00-18:40 | Vascular control of the peri-sinus immune barrier against viral invasion Prof. Gou Young Koh / IBS/KAIST, Korea |
| 19:00-20:30 | Dinner |
| DAY 2 - June 17.(Sat) | |
| Morning Session Discussion Leader: Prof. Gou Young Koh / KAIST, Korea | |
| 09:00-11:00 | Round Table Discussion Brief talks by Young Scientists (Ph.D. students) Myung Jin Yang (KAIST/IBS), Hokyung Jin (KAIST/IBS), Lidiya G. Gebeyehu (KAIST/IBS), Leul Abera Admasu (KAIST/IBS) |
| Closing | |
| 11:00-12:00 | Concluding Remarks Prof. Gou Young Koh , IBS/KAIST, Korea |
| 12:00-13:30 | Lunch |

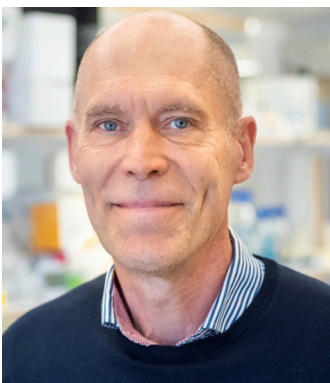
Gou Young Koh



Professor
IBS / KAIST,
Korea

Koh Gou Young is a researcher from South Korea studying organ vasculature and lymphatic vessels with an interest in angiogenesis, lymphangiogenesis, adipogenesis, and cardiogenesis. His research has contributed to the publication of more than 200 journal articles, including multiple publications on how Tie2 deficits are related to sepsis, blood-retinal barrier damage, and an imbalance of intraocular pressure in Schlemm's canal which induces glaucoma. He is a distinguished professor at KAIST and the founding director of the Institute for Basic Science Center for Vascular Research.

Christer Betsholtz



Professor
Uppsala University
Sweden

Betsholtz grew up in Lingham outside Linköping and chose to study medicine at Uppsala University. He graduated as a candidate of medicine in 1981 and defended his dissertation in 1986 at Uppsala University on a thesis on the growth factor platelet-derived growth factor (PDGF) and its role in cancer. He then became research group leader in 1987 at Uppsala University and in connection with that was appointed associate professor. In 1994, he was employed by the University of Gothenburg and appointed professor of medical and physiological chemistry. In 2004, he became professor of vascular biology at the Karolinska Institute's Department of Biochemistry and Biophysics. In 2013, he became a professor in cancer and blood vessel research at Uppsala University. 2017-2020 he led the Integrated Cardio Metabolic Center (ICMC) at Karolinska Institutet.

Lena Claesson-Welsh



Professor of Medical Biochemistry
Wallenberg Scholar
Uppsala university
Sweden

Lena Claesson-Welsh (formerly Lena Claesson), born October 15, 1956 and raised in Bösebo, Virserum and Karlstad, is a Swedish professor of biochemistry and vascular biology at the Department of Immunology, Genetics and Pathology at Uppsala University. She was appointed professor at Uppsala University in 1997, was elected to the Royal Academy of Sciences in 2003 and then to the Finnish Science Society in 2014. She has participated in over 250 publications and is cited over 40,000 times with an h-index of 100.

Taija Mikinen



Professor
Uppsala University
Sweden

Mäkinen received his doctorate at the University of Helsinki in 2002 with a thesis on the role of VEGF-3 in mechanisms of lymphangiogenesis. She continued as a postdoctoral fellow at the Max Planck Institute for Neurobiology in Martinsried in Germany from 2003. She then worked as a research group leader at Cancer Research UK in London between 2007 and 2013. She became a senior lecturer in 2013 and a professor at Uppsala University in 2019. The focus of her research has been the interaction between endothelial cells in blood and mainly lymphatic vessels and their role in various physiological processes and diseases including autoimmune disease and cancer.

Pipsa Saharinen



Professor
University of Helsinki
Finland

Mäkinen received his doctorate at the University of Helsinki in 2002 with a thesis on the role of VEGF-3 in mechanisms of lymphangiogenesis. She continued as a postdoctoral fellow at the Max Planck Institute for Neurobiology in Martinsried in Germany from 2003. She then worked as a research group leader at Cancer Research UK in London between 2007 and 2013. She became a senior lecturer in 2013 and a professor at Uppsala University in 2019. The focus of her research has been the interaction between endothelial cells in blood and mainly lymphatic vessels and their role in various physiological processes and diseases including autoimmune disease and cancer.

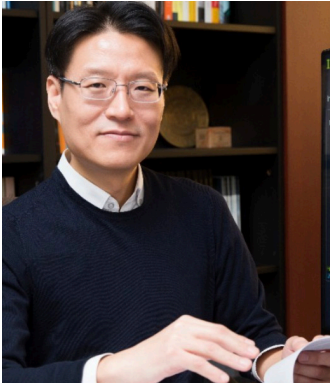
Michael Potente



Prof. Dr. Michael Potente
Berlin Institute of Health at Charité
Germany

10/2016 – Berlin Institute of Health (BIH) Visiting Professor, Max Delbrueck Center, Berlin Germany
12/2012 – Max Planck Research Group Leader, Max Planck Institute for Heart and Lung Research, Bad Nauheim, Germany
12/2012 – present Consultant Cardiologist, Department of Internal Medicine III, Cardiology, Goethe-University, Frankfurt, Germany
10/2011 – 11/2012 Senior Physician, Department of Internal Medicine III, Cardiology, Goethe-University, Frankfurt, Germany
07/2004 – 09/2011 Resident, Department of Internal Medicine III, Cardiology (Prof.Dr. A.M. Zeiher), Goethe-University, Frankfurt, Germany

Pilhan Kim



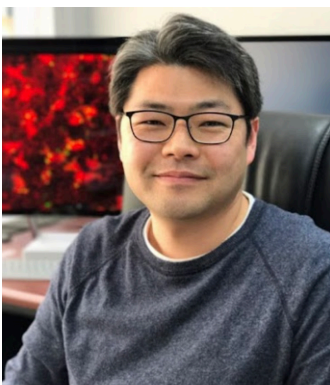
Professor
KAIST
Korea

EDUCATION 2000 – 2005 MS/PhD in Electrical Engineering Seoul National University, Korea
1996 – 2000 BS in Electrical Engineering Seoul National University, Korea

EMPLOYMENT

2010 – present Associate Professor / Assistant Professor
Graduate School of Medical Science and Engineering (GSMSE)
Graduate School of Nanoscience and Technology (GSNT) KAIST, Daejeon, Korea

Won-Suk Chung



Associate Professor
KAIST
Koera

Dr. Chung is an assistant professor in the Department of Biological Sciences at KAIST in South Korea. He earned his B.S degree at Seoul National University in South Korea and received his Ph.D. in developmental genetics in 2009 at the University of California, San Francisco. After completing his Ph.D., he worked as a postdoctoral researcher with Dr. Ben Barres at Stanford University. During his postdoctoral work, he found that astrocytes, the most abundant cell type in the central nervous system, actively contribute to the activity-dependent synapse elimination that refines neural circuits during development by phagocytosing synapses via the MEGF10 and MERTK phagocytic pathway. In 2016, Dr. Chung started his own laboratory at KAIST, where he is continuously working on the molecular mechanisms and physiological impacts of astrocyte-mediated synapse elimination in healthy and diseased brains.

Keehoon Jung



Associate Professor
Seoul National University
Korea

2018- Assistant Professor at Seoul National University
2013-2018 Research Fellow at Edwin L. Steele Laboratories for Tumor Biology, Harvard Medical School/MGH
2010-2013 Research Fellow at Wellman Center for Photomedicine (In Vivo Imaging), Harvard Medical School/MGH
2005-2010 Ph.D. in Biological Sciences and Biomedical Science & Engineering Program, KAIST
2001-2005 B.S. in Biological Sciences, KAIST

Seon Pyo Hong



Doctor
IBS
Korea

Dr. Hong is a research fellow of the Center for Vascular Research, Institute for Basic Science. His research field of interest is vascular biology, especially in maintenance and function of organ-specific lymphatic vessels. He received the B.S. degree from the department of biochemistry at Chungbuk National University, South Korea in 2013. He then received the Ph.D. degree in graduate school of medical science and engineering at KAIST, South Korea in 2018. After completing his Ph.D., from 2018 to 2021, he worked as senior researcher of the Center for Vascular Research, Institute for Basic Science.

Bojana Jakic



Doctor
Uppsala University
Sweden

June 16-17, 2023
KNTEC, Stockholm, Sweden

